

## SoHo Mews

Retail & Residences  
New York, New York



1



2

311 West Broadway is a residential condominium project on a 28,000-square foot through-block site in New York City's Soho Cast Iron Historic District.

The project consists of two buildings, one nine-story building facing West Broadway and one eight-story building facing Wooster Street, with a courtyard mews between the buildings. The development contains a total of 175,000 square feet, with 5,000 square feet of ground floor commercial space, 68 luxury dwelling units and underground parking.

The design features a stone base, metal panels and floor to ceiling glass with horizontal and vertical channels expressing

floor slabs and columns. The use of a metal and glass facade recalls the evolution of these materials in the Soho Cast Iron Historic District. Three different glass types are used—clear, frosted and fritted to give further depth and layering to the facade.

The massing of the buildings relates to the specific scale of West Broadway and Wooster Street and re-establishes the continuity of the streetwall. Approval of The New York City Landmarks Preservation Commission and issuance of zoning special permits from The Department of City Planning was required.

1. Axonometric

2. From Grand Street Looking South



*Soho Cast Iron Historic District site plan*



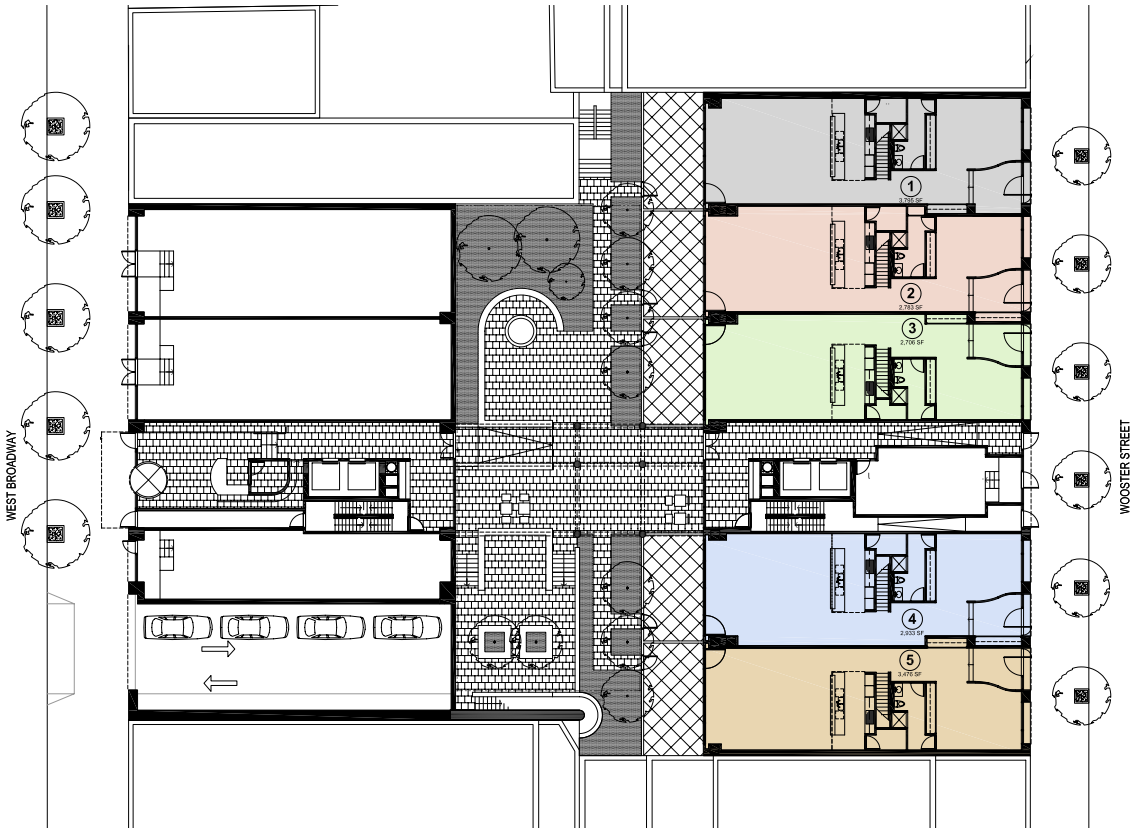
*Site context axonometric*

**SoHo Mews**

Retail & Residences



Typical floor plan



Ground floor plan



West Broadway façade

**SoHo Mews**

Retail & Residences



*Lobby*



*Typical Kitchen*

## SoHo Mews

Retail & Residences

### Key Project Information

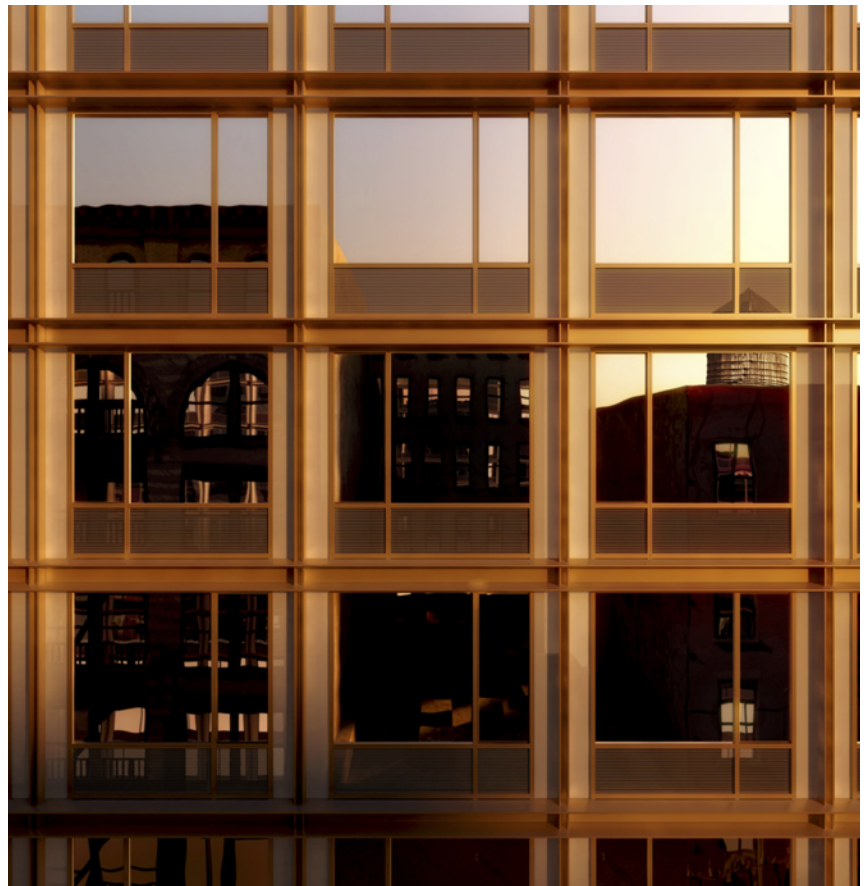
- 28,000-square foot through-block site in New York City's Soho Cast Iron Historic District
  - two buildings, one facing West Broadway and one Wooster Street, with a courtyard mews between
  - 5,000 square feet ground floor commercial space, 68 luxury units and underground parking
  - design features a stone base, metal panels and floor to ceiling glass
- 
- completion     Fall 2008
  - gsf               175,000

*"An elegant interpretation of the Soho aesthetic...a beautiful and supremely appropriate addition to the district."*

New York City Landmarks  
Preservation Commission  
February 15, 2005



Bathroom



Window detail